



SPRING SELECT

SIMMENTAL

BULL AND SELECT FEMALE SALE

VJV AUCTION MART, DAWSON CREEK, BC / LUNCH AT 12 PM, SALE AT 1 PM MST

MARCH 7, 2020

SPRING SELECT

SIMMENTAL

BULL AND SELECT FEMALE SALE

March 7, 2020 | VJV Auction Mart, Dawson Creek, B.C | Sale Time 1 pm

Vold, Jones & Vold Auction Co Ltd., 301-116th Ave Dawson Creek, BC, Dawson Creek office: (250) 782-3766

If you cannot attend
sale day, order bidding is
available via phone.

SALE DAY PHONES



Chet Jans <i>Fallen Timber Farms</i>	250-219-8200
Jamie Jans <i>Fallen Timber Farms</i>	250-219-8008
Phil Pybus <i>Commercial Heifers</i>	780-864-0325
Yancy Crosier <i>Auctioneer</i>	403-485-0887
Peter Raffin <i>Ringman</i>	250-260-0758
Trapper Green <i>Ringman</i>	780-837-0171
Dan Schleppe <i>Fieldman</i>	250-786-5698

BUYERS INFORMATION

- Animals will be available for viewing on or before sale day.
- All sale day management from the block and ring will be supplied by VJV and associated staff.
- Please join us in 'Spring Select' Style hospitality before, during, and after the sale, and be sure to enjoy the complimentary lunch before the sale.
- There will be \$100/head discount for all bulls picked up on sale day.
- Free delivery within 300km of Dawson Creek, BC. Deliveries over this distance will be arranged at cost.
- Bulls may be returned to Consignor's Farm free of charge until May 1, 2020, at such time a cost of \$3/day/head will be charged to the buyer.
- All animals returning to Consignor's Farm must be insured, and are left at owner's risk.
- Insurance is available via Monica Czech at Canadian Farm Insurance Corp, 780-318-3636
- All bulls are semen tested, palpated, scrotal measured and health inspected by certified veterinarians.
- Should any bull fail to be a satisfactory breeder, he will be replaced with a bull of equal value and quality at sellers' discretion, or a credit will be given towards the purchase of another consignor bull. In no event shall Fallen Timber Farms be responsible for reimbursing more than the purchase price. No Refunds.
- All FTF bulls and females have been Spring vaccinated with Ultrachoice 8 way, killed Triangle 10 IBR/BVD, and Ivermectin has been administered.

BREED AVERAGE - BOLT SPRING 2020 GENETIC EVALUATION

CE	BW	WW	YW	MCE	Milk	MWW	STAY	CWT	REA	FAT	MARB	API	TI
6.7	3.4	69.6	102.8	4.0	25.2	60.4	16.2	26.1	0.78	-0.129	-0.10	115.1	65.5

The Spring 2020 genetic evaluation was conducted by ASA and uses a North American multi-breed dataset that includes data from Canadian Simmental, American Simmental, American Red Angus, Canadian Angus and American Gelbvieh, among other breeds. Evaluation results for most traits are directly comparable between participating breeds.



FALLEN TIMBER FARMS *Chet and Jamie Jans*

Box 223, Groundbirch BC, V0C 1T0

Tel: (250) 780-2141 | Jamie: (250) 219-8008 | Chet: (250) 219-8200

Email: info@fallentimberfarms.com | www.fallentimberfarms.com

WELCOME

Welcome to the 7th annual Spring Select Simmental Bull and Female Sale. This edition is once again on the first Saturday in March, at VJV Dawson Creek. This year's purebred and full blood Simmental bull offering is purposefully bred and grown right at FTF, and the variety on offer is quite possibly the most diverse but consistent pen we have raised. Although we always offer a few registered yearling heifers on offer, this year the pen for sale has grown significantly due to our own expanding herd, and we are truly excited for these special girls to go out to other herds and raise great calves. Phil and Barb Pybus are joining the sale again with a great group of commercial Simmental cross opens that would be a welcome addition to anyone's herd. We are also very proud to host the Groundbirch 4H Multiclub Helping Hands Fundraiser again this year, and urge you to come out and support the community's Youth.

Our breeding plan has developed over the years, however the end goal of producing a versatile set of calves each season has not changed. We strive for a consistent set of calves across multiple blood lines which are vigorous at birth, growthy past weaning deep into their yearling class, and are capable of excelling in harsh climates. These calves are full of middle but moderately framed and muscled. Developing honest cattle which will go to work in any herd is our mission.

The bull pen on offer in 2020 should have something for everyone. From calving ease to performance, Red, Black, Baldies and Fleckvieh, there is deep Simmental versatility across the board. Our A.I. offering is especially exciting this year and kicks off the catalogue with some calving ease reds back to the calving ease specialist MRL Western Force, along with a special breed staple bull progeny lot sired by LFE Casino. The fullblood calves on offer are each special in their own rights, however FTF General 621G has been a pasture and pen favorite for all who have stopped in and shouldn't be missed when appraising the bulls on sale day. Our new walking sires MRL Dare Devil, and MRL Whiskey, did not disappoint and as seen in the pages that follow, the consistency across each sire group is astounding. FTF Gibson 668G as sired by MRL Whiskey is perhaps as complete of a herd sire prospect as we have produced and I have high hopes for him in wherever he goes to work. The Corner stone of our breeding program continues to be Capone and his calves are as growthy, showy, and consistent as ever. Take special note of FTF Gangster 628G as he is as special in the pen as he is on paper.

We really do strive to produce seedstock for use in real world conditions, specifically designed for cattle herds operating in the North Country. We maintain a no/low pressure work environment when handling cattle, and believe in temperament as strict criteria for animal retention. Our bull development program is based on oat and alfalfa silage along with locally grown oats used in compliment with a soy based pellet complete with all minerals and supplements tailored for yearling bull development. Through feed analysis and basic animal husbandry principles, we pay special attention to each group of calves to ensure they are developed with longevity in mind, but fed to exemplify their growth potential. Our yearling bulls are made to go to work.

In closing, we look forward to meeting you on or before sale day, and working together to supply tailor made genetics for your operation. Should you ever have questions or concerns regarding your purchase or require assistance during breeding, please do not hesitate to contact us.

Chet, Jamie, Taos, Rhett & Nash Jans

FALLEN TIMBER FARMS

a: Box 223, Groundbirch, BC, V0C 1T0
h: 250-780-2141
c: 250-219-8008 (Jamie)
c: 250-219-8200 (Chet)
e: info@fallentimberfarms.com
www.fallentimberfarms.com





ROCK STAR CAPONE 5C



MRL WHISKEY 54D



MRL DARE DEVIL 243D

Fallen Timber *Current* **HERDSIRES**



LFE RS LEWIS 3166E



DEEG CD MR 81F



RENDEZVOUS 244F

Future Fallen Timber HERDSIRES

Herdsire: MRL Western Force



LOT 1

Polled Purebred. The kick off bull up for review in this year's catalogue is a moderate made cherry red Western Force son, raised on a very correct solid red Arizona female. Arizona was a former black herd sire used extensively, but with a large number of retained females, he ran his course. The Arizona dams at work in our herd are moderate, good footed, tidy uddered and well muscled. We purchased a pack of semen on Western Force with an end goal of producing moderate calves with lower birth weights and great gain. We were not disappointed in the resulting calves, and the breed leading EPD's on this guy are icing on the cake!



1

FTF FIEST 600F

Male | PG1275213 | FTF 600F | December 20, 2018

MRL WESTERN FORCE 251B

{ MRL 67X
MRL MISS 2543Z
EDN ARIZONA 131A
FTF BLACK COFFEE 113B

FTF ESPRESSO 444E

BW	WWT	adj YWT	EPDs	CE	BW	WW	YW	Milk	MCE	MWWT	STAY
80	750	1348		10.9	2.1	64.8	104	27.3	10.1	59.7	18.3

2

FTF FLOYD 602F

Male | PG1275215 | FTF 602F | December 24, 2018

MRL WESTERN FORCE 251B

{ MRL 67X
MRL MISS 2543Z
ERIXON LAD 5C
FTF APRICOT 11A

FTF DAISY 401D

BW	WWT	adj YWT	EPDs	CE	BW	WW	YW	Milk	MCE	MWWT	STAY
72	600	1082		10.8	0.2	53.4	81.4	24	7.4	50.7	17.4

LOT 2

Polled Purebred. Floyd is another cookie cutter Western Force son back to a Red Rocket dam. Smooth, long and deep, with a tidy udder sums her up. 602F is balanced, muscled evenly and loose in his make, additionally he moves out fantastically. If you are in the market for a clean fronted, low birth weight red Simmental, take a close look at Floyd.





LOT 3

Polled Purebred. Firepower is off of Taos's black cow (an Arizona sired female back to our old legend X-T Upstart). Pedigree wise this calf looks like a sure bet to me, and on paper his numbers align with this thinking. The Western Force Son's as a result of breeding to various types of dam's are so consistent, even, balanced, and ultimately are a sign of his dominance in the breed as an elite AI Sire. If you were to cut the tags off this set of son's you would have a hard time telling them apart.

3

FTF FIREPOWER 605F

Male | PG1275223 | FTF 605F | December 26, 2018

MRL WESTERN FORCE 251B { MRL 67X
MRL MISS 2543Z
FTF EASY 447E { EDN ARIZONA 131A
FTF MS GUNZZ 9Z

BW	WWT	adj YWT	EPDs	CE	BW	WW	YW	Milk	MCE	MWWT	STAY
74	710	1187		13.7	0.3	63.2	99.4	24.1	12	55.7	18.1

4

FTF FAIRMONT 606F

Male | PG1275225 | FTF 606F | December 27, 2018

LFE RED CASINO 3036X { LFE BS LEWIS 322U
LFE DREAM LADY 112P
FTF DAISY 335D { EDN ARIZONA 131A
GREAT DANE RED DESTINY

BW	WWT	adj YWT	EPDs	CE	BW	WW	YW	Milk	MCE	MWWT	STAY
83	842	1120		10.7	1.6	64.5	98.4	22.2	6.3	54.5	14.8



LOT 4

Polled Purebred. Here is another calving ease style AI bull, with a twist on the top side, going back to Lewis Red Casino. We dip into this bloodline in our AI program frequently as the calves are very honest and easy doing, with a touch of showiness to them. Fairmont is no exceptions, and has a fantastic attitude on top of his style. His red Arizona dam is aligned with this description and the Granddam (Destiny) is still at work and going strong at 12years of age. We typically retain females in this cow family as they are super functional, moderate, balanced, and excellent mothers.



5

FTF GENERAL 621G

Male | P1275262 | FTF 621G | January 06, 2019

SILVERLAKE ROCKY 238C

{ LFS POL BALBOA 40U
SILVERLAKE ISLA

EAGLE RIDGE AVRILL 25A

{ CHAMPS BRAVO
EAGLE-RIDGE 15Y

BW	WWT	adj YWT	EPDs	CE	BW	WW	YW	Milk	MCE	MWWT	STAY
103	988	1405		6.4	3.5	78.1	107.3	30.3	4.1	69.4	10.7

Polled Full Blood. Jamie claimed this bull as “hers” right from the minute he hit the straw, and what can I say other than she found him first. . He is a real character and got hitched with a farm name of “Gary” all Summer and Fall. He is an AI outcome which Cattlemen dream of, and is 100% a pen standout and sale feature. Perfect Goggles, liver red, smooth polled, and jam packed full of meat in all the right places. He walks out smooth and correct and has a great temperament. General’s Eagle Ridge dam is a dark red fleck momma cow, with great feet. As you can see, General is a spitting image of his sire. Long spined, moderately framed, and smooth made.



Silverlake Rocky 238C, Sire of Lot 5



LOT 6

Horned Full Blood. Here is a really nice moderate bull from a home grown AI Rolex female back to a rock solid Eagle Ridge cow. There is some serious maternal strength within this guy's makeup, not to mention nice tidy square udders and square feet. Fetch is a soggy calf that is balanced front to back, and generally easy on the eyes.

6

FTF FETCH 611F

Male | 1275231 | FTF 611F | December 30, 2018

EAGLE-RIDGE LOBO 11L

{ ROONIK
JB HENDRIKA 28H

FTF DIJON 409D

{ DOUBLE BAR D ROLEX 267X
EAGLE RIDGE ASTRA 39A

BW	WWT	adj YWT	EPDs	CE	BW	WW	YW	Milk	MCE	MWWT	STAY
95	827	1252		7	3.5	54.5	74.8	32.8	3.5	60.1	13.3

7

FTF GARMIN 632G

Male | 1275280 | FTF 632G | January 10, 2019

DOUBLE BAR D ROLEX 267X

{ PRL PORTERHOUSE REGENT
MFI HELGA 6019

EAGLE RIDGE ABBY 60A

{ CHAMPS ROMEO
EAGLE-RIDGE 61W

BW	WWT	adj YWT	EPDs	CE	BW	WW	YW	Milk	MCE	MWWT	STAY
100	810	1296		2.9	4.7	56.6	78.4	33.6	2	61.9	13.7



LOT 7

Horned Full Blood. Garmin is a Rolex sired AI calf off of quite arguably our best Full Blood female. She is very moderate and correct in each regard. She has a nice big barrel, does well in the harshest of environments, and is set up on great feet and carries a perfect udder. 632 is a similar make in type of bull to that described in Lot 6, but is a shade darker red.

Herdsire: Rock Star Capone 5C



8

FTF FISCHETTI 607F

Male | BPG1275226 | FTF 607F | December 27, 2018

ROCK STAR CAPONE 5C

{ MR TR HAMMER 308A ET
RF INTENSE 359A

TWIN-CHIEF UNIQUE 877W

{ TWIN-CHIEF PRINCE 203P
TWIN-CHIEF PRIZE 877P

BW	WWT	adj YWT	EPDs	CE	BW	WW	YW	Milk	MCE	MWWT	STAY
102	835	1317		7.7	3.1	71.5	108.1	19.5	2	55.3	14.6

Polled Purebred. The Black section of the catalogue is a shade smaller than years past as we rely on hetero black bulls and quite often get as many red calves, and some years (like this pen) even more reds than blacks. Fischetti is a cookie cutter Capone calf, long, deep, smooth, and tons of growth built right in. He is backed to a never miss Twin Chief female that has bull calves working in several herds across the Peace Country.

9

FTF GIORDANO 616G

Male | BPG1275254 | FTF 616F | January 02, 2019

ROCK STAR CAPONE 5C

{ MR TR HAMMER 308A ET
RF INTENSE 359A

FTF ANGLE 30A

{ PAW RED 28X
GREAT DANE TESSA

BW	WWT	adj YWT	EPDs	CE	BW	WW	YW	Milk	MCE	MWWT	STAY
105	832	1309		3.2	4.8	76.9	119	18.6	-0.5	57.1	16.7

Polled Purebred. 616G has had herd bull look right from day 1. Tons of top, big hip, deep quarter, massive leg structure, and blacker than a black bear! His liver red momma cow is a massive barrelled girl with exceptional hair and tidy udder which is a direct result of Bulldog buried way back in the pedigree.

10

FTF GALANTE 639G

Male | BPG1275289 | FTF 639G | January 11, 2019

ROCK STAR CAPONE 5C

{ MR TR HAMMER 308A ET
RF INTENSE 359A

TYMARC CLASSY 812U

{ HRD REMINGTON RED 111S
TYMARC MISS FRED 610S

BW	WWT	adj YWT	EPDs	CE	BW	WW	YW	Milk	MCE	MWWT	STAY
100	800	1358		5	4.2	72.5	110	23.7	2	60	14.5

Polled Purebred. Another black edition Capone son, and what a job his Tymarc female did on him! Old 812U is a cornerstone female in our herd, and at 12 years of age she carries her udder like a lot of second calvers wish they could! Galante is solid in all departments but perhaps a shade more showy than the coarser made brothers. This being said, you have to be under the microscope to really tell the differences between these guys.



8



9



10

11

FTF GANGSTER 628G

Male | SG1275273 | FTF 628G | January 09, 2019

ROCK STAR CAPONE 5C

{ MR TR HAMMER 308A ET
RF INTENSE 359A

FTF CAPTAIN 305C

{ MAF MOUNTAIN 152B
FTF BELLINI 143B

BW	WWT	adj YWT	EPDs	CE	BW	WW	YW	Milk	MCE	MWWT	STAY
84	822	1227		10.3	2	76.1	123.8	23.8	7.6	61.9	16.2

Scurred Purebred. WHOA! Look long and hard at this bull on sale day and be sure to meander over his numbers. Low BW, High WW and YW, with an absolutely stacked set of EPD's, which is hard to find let me tell you. I couldn't think of a better bull to kick off the red edition Capone sons. The 305C dam cow is a real performer in a very moderate frame, and raised last year's high selling bull. Don't let this bull slip by.



12

FTF FALCONE 612F

Male | G1275243 | FTF 612F | December 31, 2018

ROCK STAR CAPONE 5C

{ MR TR HAMMER 308A ET
RF INTENSE 359A

GREAT DANE RED PRIDE

{ YR RED BULLDOG 118R
PRL PRIDE 259P

BW	WWT	adj YWT	EPDs	CE	BW	WW	YW	Milk	MCE	MWWT	STAY
89	728	1155		5.2	3	69.7	103.4	16.6	-0.3	51.5	16.7

Horned Purebred. This Baldy dude is thick, wide topped and really must be seen in person to be truly appreciated. He is a friendly guy back to a baldy female with numerous females at work in our herd and bulls peppered across the Peace.



13

FTF GAMBINO 618G

Male | PG1275256 | FTF 618F | January 04, 2019

ROCK STAR CAPONE 5C

{ MR TR HAMMER 308A ET
RF INTENSE 359A

SCSF DREAM GIRL 21U

{ WHEATLAND BULL 629S
CIRCLE F MS SHARLA 24S

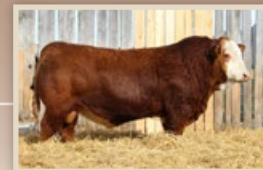
BW	WWT	adj YWT	EPDs	CE	BW	WW	YW	Milk	MCE	MWWT	STAY
99	754	1162		7.7	2.3	62.4	95	22.1	4.5	53.3	14.2

Polled Purebred. Here is Capone son with a little twist on the colour pallet from the norm. Don't be shy on Gambino as he is from one of the cornerstone females in our herd. 21U has raised some of our greats and even a sale topper in our inaugural purebred sale way back when. Off colour aside, this bull is moderate in frame, balanced in muscle distribution, and generally a smooth made bull with a stellar attitude.



SPRING SELECT

Herdsire: MRL Dare Devil 243D



14

14

FTF GALACTUS 633G

Male | PG1275281 | FTF 633G | January 10, 2019

MRL DARE DEVIL 243D

{ MRL PRETTY RECKLESS 68B
MRL MISS 2388Z

GREAT DANE MISS ACE

{ WHEATLAND RED ACE 747T
PRL PRIDE 259P

BW	WWT	adj YWT	EPDs	CE	BW	WW	YW	Milk	MCE	MWWT	STAY
104	770	1332		3.8	4.3	73.4	103.2	18.8	1.3	55.5	14.6

Polled Purebred. We purchased Dare Devil from McMillan's 2 two breeding season's back, while in the market for a heifer bull, but Jamie found a cow bull and had to have him and I wasn't going to argue. He is long deep big hiped and big quartered, all with a low BW and great WW, YW. This 633G calf is really good. All these Dare Devil calves are either solid red or blazed just like the sire, but absolutely stamped in type and shape.



15

15

FTF GRIM 669G

Male | PG1275330 | FTF 669G | January 30, 2019

MRL DARE DEVIL 243D

{ MRL PRETTY RECKLESS 68B
MRL MISS 2388Z

FTF CATWOMEN 240C

{ EAGLE-RIDGE LOBO 11L
GREAT DANE MISS WHIZ

BW	WWT	adj YWT	EPDs	CE	BW	WW	YW	Milk	MCE	MWWT	STAY
99	738	1134		2.8	3.9	63	85.4	21.5	-0.2	53	15.3

Polled Purebred. I really struggle writing about this sire group set of calves as they are so darn similar. We are in the midst of calving out another set of Dare Devil calves and looking at the ripping set of bull calves, I bet I am in the same boat next year. Consistency generally results in profitability so no complaints I suppose. The Dam to 669G is a great baldy female with a fleck parentage on the top side. She is tidy uddered (bulldog on granddam side) and moves really nicely on great feet. 669 is a smooth made moderate bull but is herd bound and moves off when visitors come through so he is probably best suited for home with a few animals in the bull pen.



16

16

FTF GAMER 675G

Male | PG1275338 | FTF 675G | February 10, 2019

MRL DARE DEVIL 243D

{ MRL PRETTY RECKLESS 68B
MRL MISS 2388Z

FTF ZAMBA 49Z

{ S-PAW RED WARRIOR 930W
GREAT DANE MISS BULLDOG

BW	WWT	adj YWT	EPDs	CE	BW	WW	YW	Milk	MCE	MWWT	STAY
96	765	1229		2.1	4.2	70.7	103.7	20.1	-1.4	55.5	15.9

Polled Purebred. The youngest bull on offer this year, but you wouldn't know it. He is long deep, and quartered up. I appreciate this bull for his overall balance and movement. This 49Z cow is a consistent female with huge middle and great udder.

Herdsire: MRL Whiskey 54D



17

FTF GLENFIDDICH 630G

Male | PG1275276 | FTF 630G | January 09, 2019

MRL WHISKEY 54D

{ MRL RED WHISKEY 101B
MRL MISS 762Y

KRSS RED BELLA 155E

{ KOP SPARTAN 113A
KRSS RED BELLA

BW	WWT	adj YWT	EPDs	CE	BW	WW	YW	Milk	MCE	MWWT	STAY
104	780	1439		6.6	4.3	79.8	116	25.1	5.5	65	16.8

Polled Purebred. 630G is a bull that always catches my attention in the pen. He is deep sided with great hair and a really tidy front third. These Whiskey calves are all stamped so similarly in make, generally soggy types with stout foot and leg structure. Glenfiddich's dam did a ripping good job on him and is herself a real sweetie to have around.



17

18

FTF GRIERSON 645G

Male | PG1275302 | FTF 645G | January 12, 2019

MRL WHISKEY 54D

{ MRL RED WHISKEY 101B
MRL MISS 762Y

FTF ZINNIA 14Z

{ S-PAW RED WARRIOR 930W
GREAT DANE PRINCESS

BW	WWT	adj YWT	EPDs	CE	BW	WW	YW	Milk	MCE	MWWT	STAY
100	780	1166		4.6	3.8	63.4	92.4	24.8	1	56.5	17.2

Polled Purebred. Grierson is a friendly moderate dark red hairy bull that is always up at the gate to see what's going on. His big across the top and deep in quarter. His Red Warrior dam is very moderate and backed by the old legend matriarch 26P, who final went down the trail last fall at 15 years of age.



18

19

FTF G&T 652G

Male | PG1275310 | FTF 652G | January 18, 2019

MRL WHISKEY 54D

{ MRL RED WHISKEY 101B
MRL MISS 762Y

FTF CASSIDY 238C

{ STARWEST POL APEX
FTF ALLI 4A

BW	WWT	adj YWT	EPDs	CE	BW	WW	YW	Milk	MCE	MWWT	STAY
98	875	1257		9.2	4.3	80.2	116.9	26.9	10	67	17.1

Polled Purebred. 652G is a bull that is so similar in type in this sire group that I am nearly at a loss in description. Thick made, loaded with hair easy moving. His dam 238C is an awesome uddered female with great feet. Looking back, you will see Revolution on the top side and Upstart on the bottom, so 652G definitely has the pedigree to go on and do some good. This is a bull from generations of retained cow families in our herd. If you look into EPD numbers, this bull is one to star.



19

SPRING SELECT

11



20

FTF GLADIATOR 655G

Male | SG1275315 | FTF 655G | January 21, 2019

MRL WHISKEY 54D

{ MRL RED WHISKEY 101B
MRL MISS 762Y

FTF DIXEN 406E

{ ERIXON LAD 5C
VIRGINIA MS POLL UREEKA

BW	WWT	adj YWT	EPDs	CE	BW	WW	YW	Milk	MCE	MWWT	STAY
86	750	1332		6	3.3	75.1	112.8	22.9	4.8	60.5	16.2

Scurred Purebred. 655G is so similarly made to Lot 19 that they could be full brothers, but are most definitely different on the cow family side. Gladiator's dam is a great Red Rocket female back to a 12year old Virginia cow that never misses. Generations of beautiful udders lie in this pedigree.



21

FTF GRANTS 661G

Male | PG1275321 | FTF 661G | January 23, 2019

MRL WHISKEY 54D

{ MRL RED WHISKEY 101B
MRL MISS 762Y

KRSS RED AMARETTO 59E

{ KRSS RED CALIENTE
KRSS RED AMARETTO

BW	WWT	adj YWT	EPDs	CE	BW	WW	YW	Milk	MCE	MWWT	STAY
88	630	1285		8.7	2.6	66.1	98.2	22.6	5.3	55.7	16.9

Polled Purebred. Grants is a great made bull with tidy head and nice hair, back to a KRS female that is as showy as they come. He moves out on nicely shaped feet and has the stereotypical Whiskey gate, and soggy side. He is a friendly guy that comes for a visit when out walking the pen.



22

FTF GIMLET 665G

Male | PG1275325 | FTF 665G | January 07, 2019

MRL WHISKEY 54D

{ MRL RED WHISKEY 101B
MRL MISS 762Y

FTF EMMA 424E

{ MAF MOUNTAIN 152B
FTF CASSIDY 238C

BW	WWT	adj YWT	EPDs	CE	BW	WW	YW	Milk	MCE	MWWT	STAY
102	765	1404		11.5	4.4	73.6	109.6	27.9	10.9	64.7	16.6

Polled Purebred. 665G is a dark red big topped but moderate bull that has EPD's to go with his flashy look. I have always appreciated the hip in this bull and love the extra muscle he carries due to that added length. His dam is destined to be a great in our herd coming from a legendary cow family, with relation on the bottom side to Lot 19. Strong maternal in this bull.

23

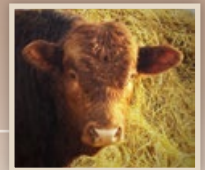
FTF GIBSON 668G

Male | SG1275329 | FTF 668G | January 30, 2019

MRL WHISKEY 54D{ MRL RED WHISKEY 101B
MRL MISS 762Y**FTF MISS UPSTART 206B**{ X-T RED UPSTART 84U
GREAT DANE RED PRIDE

BW	WWT	adj YWT	EPDs	CE	BW	WW	YW	Milk	MCE	MWWT	STAY
100	858	1409		8	4	82.8	119	20.2	7.4	61.6	17.1

Scurred Purebred. Some bulls naturally have a presence to them in the pen. They walk out and present like the dude in charge. This bull is that guy in this year's pen. Gibson is my personal favorite in this group. He has Herdsire written all over him, plus a near perfect blaze face. He is ultra long made but so full of rib with muscle draped deep into his quarter. I could go on and on about this bull, and he is definitely worth a look on sale day if you are in the market for a blaze face red bull.

**Herdsire: FTF Backwoods 127B**

24

FTF GORD 614G

Male | G1275245 | FTF 614G | January 01, 2019

FTF BACKWOODS 127B{ MMWK VELOCITY 41Y
GREAT DAWE RED FIRE**FTF DAZE 338D**{ EDN ARIZONA 131A
GREAT DANE TARA

BW	WWT	adj YWT	EPDs	CE	BW	WW	YW	Milk	MCE	MWWT	STAY
69	650	1117		3.6	4	63	91.7	23.1	3	54.6	17.4

Horned Purebred. Twin. Here is a bald face red bull from a home grown, perfectly uddered female with awesome rib, length and feet. This guy is very moderate and smooth, and has a really nice top line on him with lots of width.



25

FTF GARTH 615G

Male | SG1275250 | FTF 615G | January 01, 2019

FTF BACKWOODS 127B{ MMWK VELOCITY 41Y
GREAT DAWE RED FIRE**FTF DAZE 338D**{ EDN ARIZONA 131A
GREAT DANE TARA

BW	WWT	adj YWT	EPDs	CE	BW	WW	YW	Milk	MCE	MWWT	STAY
57	635	1126		3.6	4	63	91.7	23.1	3	54.6	17.4

Scurred Purebred. Twin. Same type as his full brother described in lot 24, except he is dark red. His dam is hard working female with her first calf heifer at work in the Peace and going strong.



SPRING SELECT



26

FTF GARRINGTON 638G

Male | PG1275288 | FTF 638G | January 11, 2019

FTF BACKWOODS 127B

{ MMWK VELOCITY 41Y
GREAT DAWE RED FIRE

FTF MISS UPSTART 208B

{ X-T RED UPSTART 84U
GREAT DANE RED DESTINY

BW	WWT	adj YWT	EPDs	CE	BW	WW	YW	Milk	MCE	MWWT	STAY
104	810	1138		3.1	4.9	71.3	104.4	22.7	3.7	58.4	17.6

Polled Purebred. Garrington has the herd bull look, no doubt about it. He is structured in a very correct fashion and subsequently moves out fantastically. He has a nice small head and smooth shoulder with good hip and quarter. He is not the friendliest bull in the pen and likes hanging back when you are out visiting the with his pen mates. This being said he handles in the squeeze and chute fine, he's just not the pail bunter type.

GARTH SHAW, FAIRVIEW, AB

MIKE & WYNTER WEISS, SILVER VALLEY, AB

MATT AND SARAH WEISS, SILVER VALLEY, AB

BAR-HILL INVESTMENTS LTD -PHIL & BARB PYBUS, SPIRIT RIVER, AB

ALAN WETHERILL, GROUNDBIRCH, BC

BLACKSMITH RANCH - BILL SMITH, GROVEDALE, AB

EDWARD & BETTY ARMAGOST, SPIRIT RIVER, AB

MIKE PETERSON, SUNDRE, AB

PAINTED K FARMS - KAYLYN ROUNDS, DAWSON CREEK, BC

PATTERSON CATTLE CO LTD, DAWSON CREEK, BC

SUNSET SIMMENTALS, DAVE & BARBARA LOEWEN, PRESPATOU, BC

LITTLE PRAIRIE FARMS, DALE & LORNA SMITH, TOMSLAKE, BC

BRAYDON MCMILLAN, DAWSON CREEK, BC

MARK JACKLIN, ELMWORTH, AB

ELYSIA DAY, GORDONDALE, AB

DALTON ODDEN, GROUNDBIRCH, BC

RAY SHAW, HYTHE, AB

RAFTER DL RANCH - DAN AND ROXANNE LA GRECA, GROUNDBIRCH, BC

OLAF & TARA HARPE - DEMMITT, AB

Thank You
TO OUR 2019 BUYERS

SELECT PUREBRED FEMALES

27

FTF GILLIS 646G

Female | PG1275303 | FTF 646G | January 13, 2019

ROCK STAR CAPONE 5C

{ MR TR HAMMER 308A ET
RF INTENSE 359A

FTF APPLE 5A

{ PAW RED 28X
GREAT DANE RED LADY

BW	WWT	adj YWT	EPDs	CE	BW	WW	YW	Milk	MCE	MWWT	STAY
97	726	764		3.2	5.2	73.9	114	19.8	1.9	56.8	17.2

Polled Purebred. The first heifer in this year's offering is a Capone female, the first on offer ever, and she is a beauty. Deep dark red and a great blaze face. Her momma cow is a picture perfectly uddered girl sired by our old calving ease specialist, South Paw 28X. Smooth, long, deep, and correct, what more could you ask for?



27

28

FTF GAMORA 635G

Female | PG1275284 | FTF 635G | January 10, 2019

MRL DARE DEVIL 243D

{ MRL PRETTY RECKLESS 68B
MRL MISS 2388Z

GREAT DANE COPPER WAVE

{ IPU RED BODYBUILDER 62S
AEDJ MS COPPER 119T

BW	WWT	adj YWT	EPDs	CE	BW	WW	YW	Milk	MCE	MWWT	STAY
96	731	858		4.5	3.9	71.9	104.8	21.2	2.7	57.2	16.7

Polled Purebred. 635G is the first of the 3 Dare Devil females on offer and off a standout liver red Great Dane Female. Gamora has the showy smoothness to her with plenty of spine and ample muscle in all the right spots. I appreciate her overall body type, and if she turns out anything like her dam, she will have a perfect udder and travel out on nice big steep feet.



28

29

FTF GALACTA 664G

Female | PG1275324 | FTF 664G | January 24, 2019

MRL DARE DEVIL 243D

{ MRL PRETTY RECKLESS 68B
MRL MISS 2388Z

FTF CHARLOTTE 229C

{ STARWEST POL APEX
EAGLE-RIDGE ANEVA 12A

BW	WWT	adj YWT	EPDs	CE	BW	WW	YW	Milk	MCE	MWWT	STAY
98	731	820		3.8	5.3	75.9	109.9	25.3	3.7	63.3	16

Polled Purebred. It sure is tough seeing this girl go down the road. 664G is plenty thick, nice and long in the spine and deep in the rib, and is off a great young momma cow that is quickly proving her worth and place as a top female in our herd.



29

SELECT PUREBRED FEMALES



30

30

FTF GALAXY 671G

Female | PG1275332 | FTF 671G | January 31, 2019

MRL DARE DEVIL 243D

{ MRL PRETTY RECKLESS 68B
MRL MISS 2388Z

FTF BELLINI 143B

{ X-T RED UPSTART 84U
GREAT DANE REBA

BW	WWT	adj YWT	EPDs	CE	BW	WW	YW	Milk	MCE	MWWT	STAY
90	647	816		6.3	3.3	72.3	105.6	21.2	7.4	57.4	16.5

Polled Purebred. Another female which I wrestle with parting ways with, as she is destined to be a great cow. Her Upstart female is a never miss female from a cow family that we strictly retain. This all being said, we can't keep them all and our loss is ultimately your gain.



31

31

FTF GLAMOUR 654G

Female | G1275312 | FTF 654G | January 08, 2019

MRL WHISKEY 54D

{ MRL RED WHISKEY 101B
MRL MISS 762Y

FTF DIAMOND 402D

{ ROCK STAR CAPONE 5C
TYMARC CLASSY 812U

BW	WWT	adj YWT	EPDs	CE	BW	WW	YW	Milk	MCE	MWWT	STAY
99	736	932		4.4	5.8	86.5	128.7	22.4	3.2	65.7	15.6

Horned Purebred. Big time brood cow in the making here. A Whiskey mating back to an absolutely ripper of a Capone female. This girl is as stacked as they come and should be looked at hard on sale day if you are into big ribbed females that are long and smooth.



32

32

FTF GREY GOOSE 666G

Female | PG1275326 | FTF 666G | January 27, 2019

MRL WHISKEY 54D

{ MRL RED WHISKEY 101B
MRL MISS 762Y

FTF CUBA 223C

{ X-T RED UPSTART 84U
GREAT DANE MISS RED DECK

BW	WWT	adj YWT	EPDs	CE	BW	WW	YW	Milk	MCE	MWWT	STAY
84	668	714		10.2	2.6	68.7	95.1	23.3	8.5	57.7	16.9

Polled Purebred. Man did this mating work out. Grey Goose is a smooth made Whiskey daughter with loads of hair and shape, moving out very nicely. All the Whiskey progeny are good cattle, and I am excited to see these calves go out and work in various herds. This girls dam is a great Upstart female with a beauty udder and awesome disposition.

SELECT PUREBRED FEMALES

33

FTF GARCIA 636G

Female | PG1275285 | FTF 636G | January 11, 2019

FTF BACKWOODS 127B

{ MMWK VELOCITY 41Y
GREAT DAWE RED FIRE

FTF MISS UPSTART 214B

{ X-T RED UPSTART 84U
MISS EAGLE-RIDGE POLL 13Y

BW	WWT	adj YWT	EPDs	CE	BW	WW	YW	Milk	MCE	MWWT	STAY
86	630	719		6.4	2.6	65.5	95.4	25.4	6.1	58.2	17.1

Polled Purebred. The first Backwoods female on offer this year is super smooth and long with great hair. She is off an ultra friendly baldy Upstart female that is set up on great feet and legs and really tidy udder.



33

34

FTF GLACIER 641G

Female | PG1275294 | FTF 641G | January 12, 2019

FTF BACKWOODS 127B

{ MMWK VELOCITY 41Y
GREAT DAWE RED FIRE

FTF ZANSANITA 23Z

{ S-PAW RED WARRIOR 930W
GREAT DANE TIFFANY

BW	WWT	adj YWT	EPDs	CE	BW	WW	YW	Milk	MCE	MWWT	STAY
102	678	817		0.8	5.7	62.5	95.1	25.1	-0.4	56.4	16

Polled Purebred. Glacier's dam is a huge barrelled Red Warrior Female with heavy haircoat and a brockle face. I think 641G will end up being a similar type. The Backwoods calves we have marketed and have at work in our herd are really fancy and seem to have an extra rib built into them.



34

35

FTF MISS CUTTER 676G

Female | PG1275339 | FTF 676G | February 10, 2019

FTF CUTTER 303C

{ X-T RED UPSTART 84U
GREAT DANE REMINGTON WAVE

FTF BRANDY 112B

{ YR RED BULLDOG 118R
GREAT DANE COPPER WAVE

BW	WWT	adj YWT	EPDs	CE	BW	WW	YW	Milk	MCE	MWWT	STAY
84	678	823		6.5	1.8	71.7	103.9	20.8	4	56.7	17.2

Polled Purebred. 676G is a sweetheart tempered moderate made female with great hair and a broody look. She goes back to a hardworking bulldog female with perfect tidy udder. Cutter is a home-grown bull directly off our old go to, Upstart who has left his mark on the red Simmental division in the north country with over 100 registered progeny out working in numerous herds.



35

SELECT PUREBRED FEMALES



36

FTF GIANNA 677G

Female | PG1275340 | FTF 677G | February 12, 2019

FTF CUTTER 303C

{ X-T RED UPSTART 84U
GREAT DANE REMINGTON WAVE

FTF MS VELOCITY 109B

{ MMWK VELOCITY 41Y
GREAT DANE MISS RED DECK

BW	WWT	adj YWT	EPDs	CE	BW	WW	YW	Milk	MCE	MWWT	STAY
92	686	717		4.1	4.3	68.8	97	23	3.2	57.4	17.1

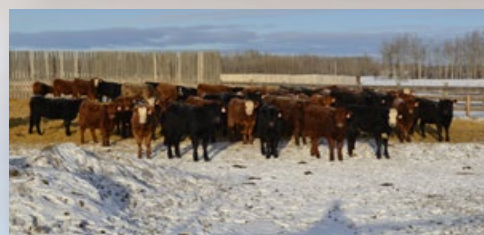
Polled Purebred. Another Cutter daughter here to round off the registered offering in this year's Spring Select Catalogue. She is very similar in make to Lot 35, and is backed by Velocity female that is very dark red, and moderate in make. Gianna has excellent hair and attitude. Cutter is working over at a neighbors farm now as we are bulled up and have a pile of Upstart blood in our herd, but we are excited about the females we did retain.

COMMERCIAL FEMALES

Phil & Barb Pybus will be once again offering commercial lots at the Spring Select Sale. This year the offering is to include:

- 10-15 Commercial Open Heifers. Simmental Cross.
- Sold in uniform groups with lot sizes and terms announced sale day.
- All females are on Total Herd Health Vaccination Protocol

For more information, please call Phil at 780-864-0325





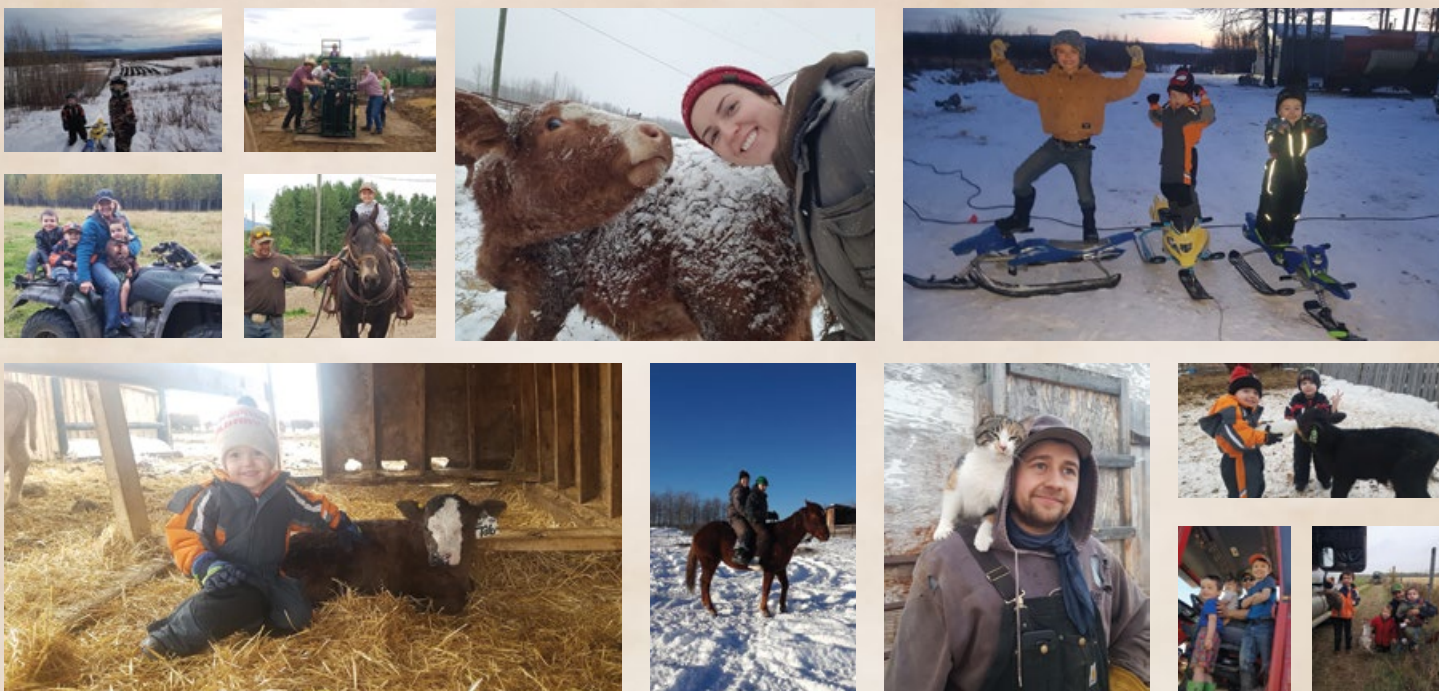
GOING, GOING, SOLD!

Need some extra hands completing those never ending tasks, pesky chores from house cleaning to barn cleaning. Members from the Groundbirch 4-H Multi Club will be up for auction to help you out. Purchase your team of two 4-H members and put them to work. We would like to send out a huge thank you to Fallen Timber Farms for giving us this opportunity.

If you have any questions please contact Shellie Wolfe
250-782-8565.



CANADA
4-H British Columbia



TERMS AND CONDITIONS

TERMS - The terms of the sale are cash or cheque payable at par at sale location. The right of property shall not pass until after settlement is made. All settlements must be made with the sale clerk before any cattle will be released. All monies are in Canadian Funds.

BID - Every animal entering the ring will be sold to the highest bidder.

SALES TAXES - Applicable sales taxes will be charged on semen, embryos and trucking fees (if listed), respective to the home province of the buyer, not the seller.

DISPUTES - In cases of disputes, bidding will be reopened between the parties involved. If no further bid is made the buyer will be the person from whom the auctioneer accepted the last bid. The auctioneer's decision in such matters will be final.

PURCHASER'S RISK - Each animal becomes the risk of the purchaser as soon as sold. Animals will be cared for at the purchaser's risk for a reasonable length of time.

INSURANCE - Will be available sale day. All animals returning to Fallen Timber Farms must be insured.

INFORMATION & PICTURES SUPPLIED - The information contained in this catalog is believed to be true and accurate.

ANNOUNCEMENTS from the auction block will take precedence over the printed matter in the catalog. Buyers are therefore cautioned to pay attention to any such announcements.

CERTIFICATE OF REGISTRY - A registration/recordation certificate issued by the Canadian Simmental Association and duly transferred will be furnished to the buyer of each animal after settlement has been made.

SHIPPING - Assistance will be given in making shipment after the sale but no risk is assumed by VJV, or Fallen Timber Farms. Expenses incurred are the responsibility of the purchaser. Purchasers are requested to furnish shipping instructions when making settlement.

BREEDERS GUARANTEE - As per applicable Canadian Simmental Association Breeding Guarantee guidelines. In no event shall the seller be responsible for reimbursing more than the purchase price.

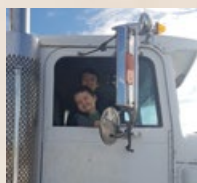
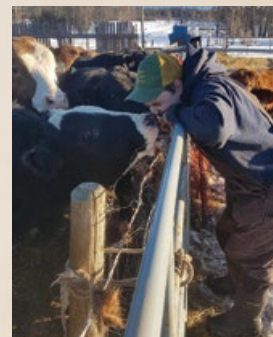
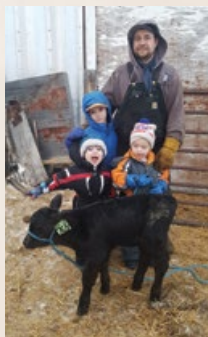
EXCEPTION TO GUARANTEE - In cases where the animal is subjected to any hormonal or surgical reproduction techniques after the sale, the guarantee shall be null and void.

HEALTH - It is the buyer's responsibility to determine health requirements for importing any animal into his province or state.

ACCIDENTS - Although every precaution will be taken to protect the safety and comfort of buyers, neither the Sales Management, auctioneer, consignors, or Association assumes any responsibility in this matter and disclaims any liability legal or otherwise in the event of accident or loss of property.

RIGHTS AND OBLIGATIONS - The above terms and conditions of the sale shall constitute a contract between the buyer and the seller and be equally binding to both. Resale of animals following purchase in this sale shall constitute a separate transaction and the rights and obligations of the two parties connected thereto are not covered by the terms and conditions of this sale. The Auctioneer shall have the right to refuse bids from anyone who has a previous record of default in payment or who has not made proper credit clearance prior to the sale with Fallen Timber Farms or VJV.

SALE NOTES



FALLEN TIMBER FARMS

Chet and Jamie Jans

Box 223

Groundbirch BC

V0C 1T0

