



SPRING SELECT

SIMMENTAL

BULL AND SELECT FEMALE SALE

VJV AUCTION MART, DAWSON CREEK, BC / LUNCH AT 12 PM, SALE AT 1 PM MST

MARCH 6TH, 2021

SPRING SELECT

SIMMENTAL

BULL AND SELECT FEMALE SALE

March 6, 2021 | VJV Auction Mart, Dawson Creek, B.C | Sale Time 1 pm

Vold, Jones & Vold Auction Co Ltd., 301-116th Ave Dawson Creek, BC, Dawson Creek office: (250) 782-3766

ONLINE BIDDING

Live Internet Viewing and Bidding is available via the VJV Dawson Creek Website: www.vjvauction.com/dawson_creek
For Assistance with the Online Auction please call Craig Jacklin 403-783-1453

Chet Jans <i>Fallen Timber Farms</i>	250-219-8200
Jamie Jans <i>Fallen Timber Farms</i>	250-219-8008
Mike Weiss <i>Commercial Heifers</i>	780-864-0356
Yancy Crosier <i>Auctioneer</i>	403-485-0887
Peter Raffin <i>Ringman</i>	250-260-0758
Trapper Green <i>Ringman</i>	780-837-0171
Dan Schleppe <i>Fieldman</i>	250-219-5698

BUYERS INFORMATION

- Animals will be available for viewing on or before sale day.
- All sale day management from the block and ring will be supplied by VJV and associated staff.
- There will be \$100/head discount for all bulls picked up on sale day.
- Free delivery within 300km of Dawson Creek, BC. Deliveries over this distance will be arranged at cost.
- Bulls may be returned to Consignor's Farm free of charge until May 1, 2021, at such time a cost of \$3/day/head will be charged to the buyer.
- All animals returning to Consignor's Farm must be insured, and are left at owner's risk.
- Insurance is available via Monica Czech at Canadian Farm Insurance Corp, 780-318-3636
- All bulls are semen tested, palpated, scrotal measured and health inspected by certified veterinarians.
- Should any bull fail to be a satisfactory breeder, he will be replaced with a bull of equal value and quality at sellers' discretion, or a credit will be given towards the purchase of another consignor bull. In no event shall Fallen Timber Farms be responsible for reimbursing more than the purchase price. No Refunds.
- All FTF bulls and females have been Spring vaccinated with Ultrachoice 8 way, killed Triangle 10 IBR/BVD, and Ivermectin has been administered.
- With Covid protocols in place we are asking 1 person per family to attend the auction in person and if you cannot attend sale day, order bidding is available via phone.

For those travelling in from out of town please feel free to book accommodations at the George Dawson Inn under VJV and enjoy the "VJV VIP Discount".

George Dawson Inn, 11705 8th St, Dawson Creek, BC V1G 4N9, Phone: (250) 782-9151

Cattle Viewing and BBQ Friday March 5th, 2021 3pm-8pm MST

BREED AVERAGE - BOLT SPRING 2021 GENETIC EVALUATION

CE	BW	WW	YW	MCE	Milk	MWW	STAY	CWT	REA	FAT	MARB	API	TI	
6.9	3.8	75.3	110.6	4.0	28.6	66.2	16.1	26.9	0.86	-0.110	-0.03	120.0	70.2	Current
7.2	3.7	74.3	109.1	4.0	28.6	65.7	15.5	25.4	0.86	-0.110	-0.03	119.4	69.9	Sires
6.1	4.3	72.8	106.2	3.6	29.1	65.4	16.4	24.7	0.84	-0.113	-0.03	117.9	68.2	Dam

The Spring 2021 genetic evaluation was conducted by ASA and uses a North American multi-breed dataset that includes data from Canadian Simmental, American Simmental, American Red Angus, Canadian Angus and American Gelbvieh, among other breeds. Evaluation results for most traits are directly comparable between participating breeds.

Welcome

Welcome to the 8th annual Spring Select Simmental Bull and Female Sale. This edition is once again on the first Saturday in March, at VJV Dawson Creek. Phone order bidding and live internet bidding will be available this year if you cannot attend. We also have videos of the animals this year so please see our website www.fallentimberfarms.com for links to those.

As we all know the world has been turned upside down in the last year, but a shining light through all of the confusion is that agriculture is alive and well and there seems to be a persistent excitement around cattle. We share this feeling and are looking forward to presenting this year's offering. We have historically stressed our goal of producing efficient marketable bulls with a spread across the pen to fit most anyone's breeding requirements. Functionally, a versatile animal that adds dollars to your bottom line is the end goal when breeding, raising, and growing these bulls, and we feel that this goal is accomplished. This year marks our largest offering of bulls to date, and there are some very special animals available from new bloodlines to the Peace Country, along with a handful of open replacement heifers. Mike and Wynter Weiss are joining the sale this year with some FTF influenced bred heifers bred back to Angus bulls.

Our herd is expanding and our breeding program reflects this expansion. Last year's sale was a major success and we are truly grateful for all buyers and bidders, new and repeat, along with those simply interested in our program. This support has allowed us to invest heavily in walking sires and females alike. Stay tuned in future sales offerings for exciting new blood lines and some outcross progeny for your appraisal.

The 2021 Class of FTF bulls has performance, calving ease, and everything in between. On the performance end there are several options from our Whiskey, Capone, and Daredevil sire groups, and each of these bulls should be considered long and hard when searching for your next walking sire. There are some bulls in the offering from these sires that are without a doubt the largest topped animals we have raised while maintaining structural correctness and fluidity in motion, in other words, balance. These bulls are very complete. The one and only Fullblood bull on offer this year is a good one coming from a great Impact female, so be sure to take note. We also have some new additions to the line up with a flare more calving ease in their make up. From the new heifer pen specialist Rendezvous 244F (Ron) a couple very catchy heifer style bulls should draw some attention. After calving 2 calf crops from "Ron" we can safely say he is heifer approved with all calves to date up and on the bag in under 15 minutes. We also have the first crop of Deeg 81F (McDavid) calves available this year. These black bulls are long and smooth and fit right in. We also have our first Lewis 3166E (Spud) calves in the pen this year and these fellas bridge the gap for those looking for a blend of calving ease while still maintaining some marketable growth.

With a large bull pen in the fall, our heifer numbers were down a bit and although we are still growing our herd, we thought it fitting to offer a female from Capone, Whiskey and Daredevil this year as we have several of each sire group already in production. Please take a look at these females, as they are raised with longevity in mind, and are girls we would gladly retain for our own use. They are each off of very very complete dams so buy with confidence.

Our animal handling philosophy remains unchanged for the 2020/2021 growing season; a no/low pressure work environment when handling cattle, with a one-way ticket to town for the bad actors. Our feed program remains unchanged as well, as we continue to believe in growing our animals with longevity in mind. Our yearling development program is based on oat and alfalfa silage along with locally grown oats used in compliment with a soy-based pellet complete with all minerals and supplements tailored for yearling development. We want to show the growth potential in a specimen while maintaining health.

We pride ourselves on repeat business and welcome new buyers to visit the ranch, learn about our operation, and visit for a while.

Respectfully,

Chet, Jamie, Taos, Rhett & Nash Jans

FALLEN TIMBER FARMS

a: Box 223, Groundbirch, BC, V0C 1T0
h: 250-780-2141
c: 250-219-8008 (Jamie)
c: 250-219-8200 (Chet)
e: info@fallentimberfarms.com
www.fallentimberfarms.com



Herdsire: ROCK STAR CAPONE 5C



1

FTF GENEROUS 700G

M | PG1314645 | FTF 700G | 17-Nov-19 | Polled Purebred

ROCK STAR CAPONE 5C

{ MR TR HAMMER 308A ET
RF INTENSE 359A

FTF MISS UPSTART 208B

{ X-T RED UPSTART 84U
GREAT DANE RED DESTINY

BW	WWT	adj YWT	EPDs	CE	BW	WW	YW	Milk	MCE	MWWT	STAY
105	910	1472		4.6	4.9	84.9	130.2	24.5	2.9	67	16

An age advantage bull here to kick off the Capone Sired group of calves in this year's offering! Capone is a masterful breeder and could not resist the 700G sweet momma cow in early February, resulting in an unplanned mating and some fencing practice for us. Although totally by accident coming into the world, this guy is intentionally in the sale and should be noted buy those looking to add some pounds to a calf crop, and likely a bit of chrome too. Coming off a cornerstone Upstart female in our herd, maternal is also built into this guy.

2

FTF GATSBY 704G

M | BG1340209 | FTF 704G | 27-Dec-19 | Horned Purebred

ROCK STAR CAPONE 5C

{ MR TR HAMMER 308A ET
RF INTENSE 359A

FTF DAWN 311D

{ EDN ARIZONA 131A
GREAT DAWE RED FIRE

BW	WWT	adj YWT	EPDs	CE	BW	WW	YW	Milk	MCE	MWWT	STAY
90	810	1323		5.3	4.7	80.5	125.2	25.3	3.1	65.5	16.8

A solid black Capone son off a sweetheart red momma cow. I appreciate this guys length of spine and muscle expression front to back. He is a performance style bull with a nice moderate birth weight and moves out really well. The dam 311C is a moderate female with nice square udder and big solid feet.



3

FTF GHOST 717G

M | BPG1340224 | FTF 717G | 30-Dec-19 | Polled Purebred

ROCK STAR CAPONE 5C

{ MR TR HAMMER 308A ET
RF INTENSE 359A

LGW MS PROGRESS 3B

{ PRO REAL PROGRESS 1Y
LGW MS TRANSFORMER9W

BW	WWT	adj YWT	EPDs	CE	BW	WW	YW	Milk	MCE	MWWT	STAY
99	750	1301		3.6	5.6	82.7	129.5	21.5	2.7	62.9	15.5

A fancy Capone son here in a moderate package. Smooth front third and a nice tidy head make this guy a candidate for those looking to splash some baldy genes into most any cow herd. The mating here back to old 3B has been done in the past with a former high seller going to Patterson Cattle Company (their resulting progeny were in high demand come fall rush). We also have a full sister at work in our herd and are really pleased. She has a perfect udder, big middle and is an excellent mother.



4

FTF HOODLUM 724H

M | PG1340250 | FTF 724H | 1-Jan-20 | Polled Purebred

ROCK STAR CAPONE 5C

{ MR TR HAMMER 308A ET
RF INTENSE 359A

FTF ZANSANITA 23Z

{ S-PAW RED WARRIOR 930W
GREAT DANE TIFFANY

BW	WWT	adj YWT	EPDs	CE	BW	WW	YW	Milk	MCE	MWWT	STAY
99	830	1297		2.3	5.9	79.5	125.4	24.8	-1.2	64.5	14.5

Thickness right here. This red edition baldy calf has been a pen standout since birth and a pasture favorite amongst those passing through. He is full of meat in all the right places, and has a good northern hair coat. He is super docile and always came for a visit out on pasture. When it comes to hardiness his 23Z dam is at the top of that column. She is massively middled and carries the same great hair.



5

FTF HOZA 725H

M | PG1340252 | FTF 725H | 2-Jan-20 | Polled Purebred, Twin

ROCK STAR CAPONE 5C

{ MR TR HAMMER 308A ET
RF INTENSE 359A

MISS EAGLE-RIDGE POLL 13Y

{ TYMARC WILSON 20W
EAGLE-RIDGE ROXANNE 60R

BW	WWT	adj YWT	EPDs	CE	BW	WW	YW	Milk	MCE	MWWT	STAY
96	820	1296		5.2	4	79.6	121.7	28.9	0.5	68.7	15.1

Another red baldy that should draw some attention sale day. This super chill dude was raised naturally by his dam, a great Eagle Ridge purebred baldy cow, and has all the ingredients to be a go-to herd sire in any pen.



SPRING SELECT

3

6

FTF HEIST 729H

M | G1340745 | FTF 729H | 4-Jan-20 | Horned Purebred

ROCK STAR CAPONE 5C

{ MR TR HAMMER 308A ET
RF INTENSE 359A

ROCK MISS JR 158D

{ JDF GUNNER 23Z
ROCK MISS KRYPTONITE 17A

BW	WWT	adj YWT	EPDs	CE	BW	WW	YW	Milk	MCE	MWWT	STAY
102	770	1442		6.9	4	83.8	127.4	21.4	6.2	63.3	15.2

This red baldy is an athletic meat machine, and carries that muscle deep in his flank. I appreciate bulls that are heavily muscled and can still move out. 729H is not the friendliest bull in this year's pen, but is reasonable to handle. I am persistently impressed with his dam, a young Flat Rock female, that is super moderate and carries a beautiful bag.



7

FTF HARVEST 745H

M | BPG1340840 | FTF 745H | 13-Jan-20 | Polled Purebred

ROCK STAR CAPONE 5C

{ MR TR HAMMER 308A ET
RF INTENSE 359A

FTF DAISY 335D

{ EDN ARIZONA 131A
GREAT DANE RED DESTINY

BW	WWT	adj YWT	EPDs	CE	BW	WW	YW	Milk	MCE	MWWT	STAY
96	830	1528		6.8	3.9	79.8	125	24.5	4.3	64.4	17

Without a doubt the most complete black baldy calf we have raised. When we went out looking for a herd sire and landed \$25k for Capone at Agribition, this is the kind of calf we were dreaming about. He is deep, muscular, athletic, full of hair, and about as chill as they come. The 335c dam is a foundation female here, and never disappoints. She is a moderate girl back to the great KSK 33U (so many females in our herd at work from this bloodline) and has a perfect tidy udder and super feet.

8

FTF HARDY 752H

M | BPG1340850 | FTF 752H | 16-Jan-20 | Polled Purebred

ROCK STAR CAPONE 5C{ MR TR HAMMER 308A ET
RF INTENSE 359A**FTF MISS UPSTART 110B**{ X-T RED UPSTART 84U
GREAT DANE PELTONS DREAM

BW	WWT	adj YWT	EPDs	CE	BW	WW	YW	Milk	MCE	MWWT	STAY
98	750	1300		5.6	4.5	81.4	126.6	19.6	3.8	60.3	14.6

A solid black bull here that needs a second look on sale day. This bull always makes me circle back once more when I am walking through the pen. He is deep, hairy, structured correctly and comes from a peach of an Upstart female. His dam is a true mother cow, with a massive barrel, and is hardy year-round.



9

FTF HEROIC 760H

M | BPG1340925 | FTF 760H | 20-Jan-20 | Polled Purebred, Twin

ROCK STAR CAPONE 5C{ MR TR HAMMER 308A ET
RF INTENSE 359A**FTF ANGLE 30A**{ PAW RED 28X
GREAT DANE TESSA

BW	WWT	adj YWT	EPDs	CE	BW	WW	YW	Milk	MCE	MWWT	STAY
82	875	1090		3	5	80.6	126.2	22.8	-1	63.1	16.4

Footnotes for Lots 9 and 10

Lot 9 and 10 are understandably "peas in a pod". These guys are super thick, and hairy all over! I appreciate these guys for there sogginess, and disposition. They are moderate bulls that I would love to see at work in the same pasture. Coming from a big hairy red momma cow with a super tidy bag and big feet, she is a hardy made northern female that clearly passes on this trait to her offspring.



10

FTF HONOR 761H

M | BPG1340927 | FTF 761H | 20-Jan-20 | Polled Purebred, Twin

ROCK STAR CAPONE 5C{ MR TR HAMMER 308A ET
RF INTENSE 359A**FTF ANGLE 30A**{ PAW RED 28X
GREAT DANE TESSA

BW	WWT	adj YWT	EPDs	CE	BW	WW	YW	Milk	MCE	MWWT	STAY
76	650	1221		3	5	80.6	126.2	22.8	-1	63.1	16.4



SPRING SELECT



11

FTF HUSTLE 770H

M | BPG1341090 | FTF 770H | 25-Jan-20 | Polled Purebred

ROCK STAR CAPONE 5C

{ MR TR HAMMER 308A ET
RF INTENSE 359A

AEDJ MS STING 12U

{ REMINGTON STING 11R
AEDJ MS COPPER 9S

BW	WWT	adjYWT	EPDs	CE	BW	WW	YW	Milk	MCE	MWWT	STAY
74	650	1394		8.4	2.5	74.1	113.2	23.9	5.8	60.9	18.5

The last Capone son on offer this year is a really flashy bull that is showy, muscular, and growthy all with a 74lbs BW. This bull has it all and is from the great 12U cow who finally went down the road this year due to old age. When it comes to strong maternal and keeper heifers the 12U bloodline is a cornerstone in our herd. This bull definitely needs a long hard look on sale day.



12

FTF GOODTIMES 715G

M | 1340222 | FTF 715G | 30-Dec-19 | Horned Fullblood

DOUBLE BAR D ROLEX 267X

{ PRL PORTERHOUSE REGENT
MFI HELGA 6019

EAGLE-RIDGE ANEVA 12A

{ ANCHOR "T" IMPACT 2H
DSLS EVA FF57T

BW	WWT	adjYWT	EPDs	CE	BW	WW	YW	Milk	MCE	MWWT	STAY
104	840	1407		1.9	6.7	65	87.5	35.5	0.2	68	15.8

The one and only fullblood on offer this year is a good one! A Rolex son back to our great Eagle Ridge 12A female. 12A is a never miss cow and has raised some great calves over the years. This bull has a puppy dog demeanor and is very correct, with an excellent top. I like his big quarter.



13

FTF HUSQVARNA 748H

M | PG1340843 | FTF 748H | 14-Jan-20 | Polled Purebred

BLACK GOLD EXCALIBUR 137E

{ KUNTZ SUPER DUTY 4Y
RF CERTAINLY FLIRTIN 532C

ANCHOR D CIERRA 7C

{ LFE KING LOUIE 3079Y
ANCHOR D BELLA 259B

BW	WWT	adjYWT	EPDs	CE	BW	WW	YW	Milk	MCE	MWWT	STAY
100	640	1199		7.6	3.1	70.4	92.7	18.5	-0.6	53.6	12.7

This guy is so Red he is almost black. Coming out deep cherry red at birth he kept getting darker and darker and has ended up as pictured; very unique to say the least. Colour aside this bull is a really balanced animal that is packed full of meat off of a baldy Anchor D cow we purchased bred last year.

Herdsire: RENDEZVOUS 244F



LOT 14

Big time heifer bull prospect right here. When we set out to find our next heifer pen walking sire we looked high and low and after a few tries we finally landed "Ron" as we call him. He is bullet proof on heifers with a perfect track record to date of calves that are up and on the bag in 15 minutes. Vigorous doesn't begin to describe these calves. 709G is a spitting image of his sire and is super clean in his front third with a small head, and slim shoulder. Although moderately made, this guy has tons of muscle and really shows his growth. The dam is a deep dark red momma cow that is a pleasure to have around.



14

FTF GRAZER 709G

M | PG1340216 | FTF 709G | 29-Dec-19 | Polled Purebred

RENDEZVOUS 244F

{ RED RAMBO 131B
RENDEZVOUS MS EXPRESS 244D

RENDEZVOUS MS MANDY 473F

{ ZSL MR RED MANDAKO 49B
RENDEZVOUS MS MANDY 473F

BW	WWT	adj YWT	EPDs	CE	BW	WW	YW	Milk	MCE	MWWT	STAY
75	650	1249		4.8	4.1	72	106	30.7	0.9	66.7	17.8

15

FTF HAT TRICK 776H

M | PG1341100 | FTF 776H | 3-Feb-20 | Polled Purebred

RENDEZVOUS 244F

{ RED RAMBO 131B
RENDEZVOUS MS EXPRESS 244D

FTF MISS BOOT 515E

{ TNT BOOTLEGGER Z268
FTF APRICOT 11A

BW	WWT	adj YWT	EPDs	CE	BW	WW	YW	Milk	MCE	MWWT	STAY
80	560	1186		7.8	2.4	62.2	93.5	28.2	3.8	59.2	15

LOT 15

Another heifer bull candidate from Ron, in a very similar package to Lot 14, with straighter hair. I really can't say enough about these calves. We have had heifers calving where the calf is _ out and already pawing their way up, resulting in a spook to the new momma! This all being said 776H is a really solid moderate bull, from a wicked homegrown Bootlegger female.



15

SPRING SELECT

Herd sire: MRL WHISKEY 54D



LOT 16

When I think about adding pounds to a calf crop this is the type of bull that comes to my mind. He is a thick made, long spined meat machine, with a huge set of pants and free moving stride. With pen topping wean weight and actual yearling weight all starting from a moderate BW, this bull is the real deal. When it comes to maternal, 713's dam is tops in our herd, mothering many of our greats. Heavy milking females that repeat performance annually sure are a pleasure to have around and I look forward to this guy passing on those traits.

16 FTF GROUNDBREAKER 713G

M | PG1340219 | FTF 713G | 30-Dec-19 | Polled Purebred

MRL WHISKEY 54D

{ MRL RED WHISKEY 101B
MRL MISS 762Y

FTF BELLINI 143B

{ X-T RED UPSTART 84U
GREAT DANE REBA

BW	WWT	adj YWT	EPDs	CE	BW	WW	YW	Milk	MCE	MWWT	STAY
102	930	1492		8.7	4.3	87.6	126	27.7	10.3	71.4	15.4

17 FTF HENNESSEY 727H

M | PG1340743 | FTF 727H | 3-Jan-20 | Polled Purebred

MRL WHISKEY 54D

{ MRL RED WHISKEY 101B
MRL MISS 762Y

FTF CUBA 223C

{ X-T RED UPSTART 84U
GREAT DANE MISS RED DECK

BW	WWT	adj YWT	EPDs	CE	BW	WW	YW	Milk	MCE	MWWT	STAY
97	870	1437		8.1	4.2	79.5	106.7	27.2	7.6	66.9	14.3



LOT 17

Sale feature here. This bull is a special animal that only comes around once in a while. 727 has been a head turner right from birth with length of spine, huge spring of rib, and a top line that is unparalleled in his sire group. This hardy guy has ample hair coat and a very strong maternal backing. His 223C dam is a never miss female that has produced some very productive progeny for producers in the Peace. Star your catalogue on this guy and study him long and hard as these sorts of bulls are hard to find. If he were an outcross in our herd we would be retaining this bull.

18

FTF HOTSHOT 741H

M | PG1340836 | FTF 741H | 12-Jan-20 | Polled Purebred

MRL WHISKEY 54D

{ MRL RED WHISKEY 101B
MRL MISS 762Y

TYMARC CLASSY 812U

{ HRD REMINGTON RED 111S
TYMARC MISS FRED 610S

BW	WWT	adj YWT	EPDs	CE	BW	WW	YW	Milk	MCE	MWWT	STAY
90	705	1251		6	4.7	79.5	109.4	30.7	5.6	70.4	13.1

With a few solid years of service, our MRL Whiskey walking sire has crossed paths with most of our cornerstone females. When we looked back on the breeding over the years, we realised that we have never bred our great Tymarc female 812U to him. This got us thinking and here is the outcome. 741G is a very solid representation of the Whiskey progeny group but carries a touch more refinement in his carcass shape and front third. As discussed, 812U is an absolute sure-fire female that produces regardless of the mating and is built right into this guy.



19

FTF HIGHBALL 749H

M | PG1340844 | FTF 749H | 15-Jan-20 | Polled Purebred

MRL WHISKEY 54D

{ MRL RED WHISKEY 101B
MRL MISS 762Y

FTF CHLOE 251C

{ PAW RED 28X
NUH MS FREEDOM 511U

BW	WWT	adj YWT	EPDs	CE	BW	WW	YW	Milk	MCE	MWWT	STAY
104	790	1419		6.3	4.4	81.4	119.2	31.5	7.5	72.1	15.5

Talk about consistency again in this lot. Length of spine, smooth shape, and loads of hair, the hardiness is visible in 749. The dam comes from a South Paw heifer bull, and she milks hard and raises good calves. I would think there is some pounds to be had in a calf crop sired by this bull.



20

FTF HUNK 782H

M | PG1341111 | FTF 782H | 28-Feb-20 | Polled Purebred

MRL WHISKEY 54D

{ MRL RED WHISKEY 101B
MRL MISS 762Y

FTF CHARLOTTE 229C

{ STARWEST POL APEX
EAGLE-RIDGE ANEVA 12A

BW	WWT	adj YWT	EPDs	CE	BW	WW	YW	Milk	MCE	MWWT	STAY
107	800	1438		6.8	5.4	85.2	121.7	33.1	7.1	75.7	14.8

A Youngster here with mature walking sire written all over him. Finding a bull like this is sure tough and I frequently look for these characteristics in our own sire pen; namely performance, length of spine, great top, big hip, and tidy head with a smooth front third. 782 is a standout amongst bulls that are 2 months older than he is and should be looked at with great appraisal on sale day. Looking back on the dam side I can safely say that 229C is a very special female. Strong maternal, great feet and udder and genetic greats stacked in - this guy is special - and he even has some impressive EPD's!





21

FTF PATRICK 784H

M | PG1341114 | FTF 784H | 8-Mar-20 | Polled Purebred

MRL WHISKEY 54D

{ MRL RED WHISKEY 101B
MRL MISS 762Y

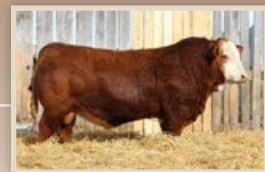
EAGLE RIDGE AVRILL 25A

{ CHAMPS BRAVO
EAGLE-RIDGE 15Y

BW	WWT	adjYWT	EPDs	CE	BW	WW	YW	Milk	MCE	MWWT	STAY
90	680	1209		10.5	2.6	79.8	108.3	34.9	9.1	74.8	13

The final Whiskey son on offer this year (named by our boys) and the youngest in the pen, comes to us from the Dam that raised the \$11,000 high selling bull in last years sale. Don't fault this guy for his age, as he fits right in, has the fancy chrome that will sharpen up a pen of calves, and most definitely is royally bred going back to the great 25A cow.

Herdsire: MRL DARE DEVIL 243D



22

FTF GUARDIAN 707G

M | PG1340213 | FTF 707G | 29-Dec-19 | Polled Purebred, Twin

MRL DARE DEVIL 243D

{ MRL PRETTY RECKLESS 68B
MRL MISS 2388Z

FTF APRICOT 11A

{ PAW RED 28X
GREAT DANE RHONDAS RED

BW	WWT	adjYWT	EPDs	CE	BW	WW	YW	Milk	MCE	MWWT	STAY
82	845	1159		3.3	3.8	70.2	102	21	2.4	56	16.2

Footnotes for Lots 22 and 23

Looking back through my notes from last year on the Daredevil set of calves, I smile in that the theme again this year is consistency. Smooth made, fancy bulls, with nice straight hair and excellent moving gates all characterize the bulls in this year's offering again...I guess some sires just stamp them...707G and his twin 708G are great representations off of a big middled hard-working female that certainly packs pounds onto her calves.



23

FTF GALAXY 708G

M | PG1340215 | FTF 708G | 29-Dec-19 | Polled Purebred, Twin

MRL DARE DEVIL 243D

{ MRL PRETTY RECKLESS 68B
MRL MISS 2388Z

FTF APRICOT 11A

{ PAW RED 28X
GREAT DANE RHONDAS RED

BW	WWT	adjYWT	EPDs	CE	BW	WW	YW	Milk	MCE	MWWT	STAY
72	700	1098		3.3	3.8	70.2	102	21	2.4	56	16.2

24 FTF GREEN LANTERN 712G

M | PG1340218 | FTF 712G | 30-Dec-19 | Polled Purebred

MRL DARE DEVIL 243D

{ MRL PRETTY RECKLESS 68B
MRL MISS 2388Z

AEDJ MS RED LIGHT 93T

{ SVS M906
LBR PEPPER 70K

BW	WWT	adj YWT	EPDs	CE	BW	WW	YW	Milk	MCE	MWWT	STAY
98	780	1311		4.7	3.7	76.1	108.7	27.4	3.4	65.4	16.4

Here is a friendly bugger if we have ever had one!. 712G is the pen puppy dog and has always been the calf to come say hi when you are out and about. Going back to the old Janzen 93T cow that raised many great calves for us over the years, I know longevity is built right into this guy. Sadly, we lost 93T this fall, but I sure am proud of her final act.



25 FTF HARDBALL 728H

M | PG1340744 | FTF 728H | 3-Jan-20 | Polled Purebred

MRL DARE DEVIL 243D

{ MRL PRETTY RECKLESS 68B
MRL MISS 2388Z

GREAT DANE RHONDAS RED

{ YR RED BULLDOG 118R
NORTONS RED RHONDA 7R

BW	WWT	adj YWT	EPDs	CE	BW	WW	YW	Milk	MCE	MWWT	STAY
90	700	1170		3.6	3.4	73	103.1	20	1.4	56.5	16

A moderate Daredevil bull with the stamped-out chrome face off of a meat machine female 67x. This dam is granddam to lots 22 and 23, and is very similar in make. Like I said before, tough keeping the writing colourful when these calves are so similar!



26 FTF HAWKEYE 731H

M | PG1340747 | FTF 731H | 7-Jan-20 | Polled Purebred

MRL DARE DEVIL 243D

{ MRL PRETTY RECKLESS 68B
MRL MISS 2388Z

TWIN-CHIEF UNIQUE 877W

{ TWIN-CHIEF PRINCE 203P
TWIN-CHIEF PRIZE 877P

BW	WWT	adj YWT	EPDs	CE	BW	WW	YW	Milk	MCE	MWWT	STAY
95	720	1401		7.4	2.8	72.1	100.9	20.6	3.3	56.6	14.3

731H comes to us from a hardworking 2009 edition female that always seems to raise a sale calf for us. Talking about consistency, 877W is that for us in a nutshell. 731H has the big hairy ears and tidy head like his dam, and great disposition.





27

FTF HELLFIRE 744H

M | PG1340839 | FTF 744H | 13-Jan-20 | Polled Purebred

MRL DARE DEVIL 243D

{ MRL PRETTY RECKLESS 68B
MRL MISS 2388Z

GREAT DANE COPPER WAVE

{ IPU RED BODYBUILDER 62S
AEDJ MS COPPER 119T

BW	WWT	adjYWT	EPDs	CE	BW	WW	YW	Milk	MCE	MWWT	STAY
90	690	1170		4.2	4	77	114.5	22.9	2.8	61.4	16.4

A solid red edition Daredevil son coming from a liver red Nielsen female 43W. With big black feet and a perfect udder, 43W is one of those correct females that always has admirers. 744H is a hard to fault nicely framed bull, smooth in make-up and deep in the right spots. This guy may be the sleeper in the pen this year.



28

FTF HIGHRISE 747H

M | PG1340842 | FTF 747H | 14-Jan-20 | Polled Purebred

MRL WHISKEY 54D

{ MRL RED WHISKEY 101B
MRL MISS 762Y

GREAT DANE REATA

{ GREAT DANE SPENCER
PRL REATA 872R

BW	WWT	adjYWT	EPDs	CE	BW	WW	YW	Milk	MCE	MWWT	STAY
102	670	1114		7.2	4.7	77.8	107.5	21.8	7.2	60.7	14.1

Solid red bull up for discussion here. Coming from our Nielsen 9U cow, strong maternal is deep in this guy. I appreciate the tidy head and smooth shoulder on this guy, and love the way he can stride out. Longevity, movement, and a solid pattern, how can you go wrong?



29

FTF HARPOON 762H

M | BPG1341011 | FTF 762H | 20-Jan-20 | Polled Purebred

MRL DARE DEVIL 243D

{ MRL PRETTY RECKLESS 68B
MRL MISS 2388Z

FTF DREAM 337D

{ EDN ARIZONA 131A
GREAT DANE MISS BULLDOG

BW	WWT	adjYWT	EPDs	CE	BW	WW	YW	Milk	MCE	MWWT	STAY
100	710	1287		4.6	3.4	72.5	106.9	21.2	1.8	57.4	16.9

Here is a change up for you. Look at this solid black bull off the baldy master Daredevil himself. The black comes from the moderate Arizona female that travels out on big black feet and has a nice square udder. If you are looking for some outcross black genetics look no further.

30

FTF HERCULES 763H

M | PG1341012 | FTF 763H | 21-Jan-20 | Polled Purebred

MRL DARE DEVIL 243D{ MRL PRETTY RECKLESS 68B
MRL MISS 2388Z**VIRGINIA MS POLL UREEKA**{ IPU THE RED MILE 12N
VIRGINIA'S MS PETRA

BW	WWT	adj YWT	EPDs	CE	BW	WW	YW	Milk	MCE	MWWT	STAY
105	620	1173		1.8	5.6	76.1	114	19.6	2	57.7	15.2

This solid red dude is smooth as silk, and has a fancy little head on him as well. Meat deep into his flank with a nice hair coat, I think this bull could fit into a lot of different herds. Coming off of a big red female from Virginia Ranches, she has big feet, a large quarter and a spine as long as a well rope.



31

FTF HORNET 774H

M | PG1341095 | FTF 774H | 27-Jan-20 | Polled Purebred

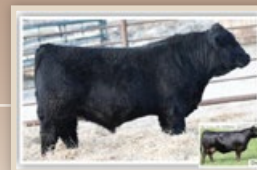
MRL DARE DEVIL 243D{ MRL PRETTY RECKLESS 68B
MRL MISS 2388Z**FTF ANALYZE 43A**{ X-T RED UPSTART 84U
NORTONS RED RHONDA 7R

BW	WWT	adj YWT	EPDs	CE	BW	WW	YW	Milk	MCE	MWWT	STAY
99	650	1169		5.7	3.2	77.3	113.7	25.2	5.2	63.9	15.6

This final Daredevil bull is off another common blood line going to the grandam KSK 67X female discussed in lot 25, 23, 22...so needless to say a bloodline we appreciate and that can raise bulls. I look to these sorts of females to add middle, pounds and hardness onto their calves; 774H has that.



Herdsire: DEEG MR 81F



32

FTF HOLSTER 779H

M | BPG1341104 | FTF 779H | 12-Feb-20 | Polled Purebred

DEEG CD MR 81F

{ LFE MCDAVID 413C
SPRINGCREEK B GOLD 102Y
ERIXON LAD 5C
FTF APPLE 5A

FTF MISS BOBE 542F

BW	WWT	adjYWT	EPDs	CE	BW	WW	YW	Milk	MCE	MWWT	STAY
90	630	1356		5.4	4.3	80.7	116.2	25.2	4.4	65.5	15.2

The first "McDavid Son" we have on offer this year is from a new walking sire we picked up at Deeg's sale in 2019. This sire is a long spined animal with very smooth shoulder and a very fancy hair coat. Coming off of the Borhson/Deeg Spring Lake Donor Cow 102Y, he is backed by a rock-solid black momma cow. Lot 32 is a moderate black bull with similar traits to his sire and is from a sweetheart Erixon sired daughter we home raised.



33

FTF SPONGEBOB 780H

M | BPG1341108 | FTF 780H | 17-Feb-20 | Polled Purebred

DEEG CD MR 81F

{ LFE MCDAVID 413C
SPRINGCREEK B GOLD 102Y
SIBELLE DIRTY HARRY 25Z
EAGLE RIDGE ASTRA 39A

FTF MISS HARRY 502E

BW	WWT	adjYWT	EPDs	CE	BW	WW	YW	Milk	MCE	MWWT	STAY
84	680	1363		8.3	3.7	75.5	107.9	31.5	5.6	69.2	17.1

Rhett fell in love with this calf when he was born and claimed him for his own. Although we debated on ownership, we agreed that he could name him, so here is SpongeBob for your appraisal. This fancy black baldy bull is very friendly and has a bit of a twist in the pedigree coming from a Fullblood first calver.



34

FTF HOUSTON 781H

M | BPG1341110 | FTF 781H | 20-Feb-20 | Polled Purebred

DEEG CD MR 81F

{ LFE MCDAVID 413C
SPRINGCREEK B GOLD 102Y
ERIXON LAD 5C
AEDJ MS STING 12U

FTF MISS BOBE 508E

BW	WWT	adjYWT	EPDs	CE	BW	WW	YW	Milk	MCE	MWWT	STAY
90	630	1179		8	2.8	78.3	111.4	25.2	6.6	64.3	16

The last McDavid Bull on offer this year is another friendly rascal back to another Erixon sired female. This guy is backed by the great Janzen 12U cow (Granddam) I discussed earlier, so great maternal and calving ease is built into this bull.

Herdsire: LFE RS LEWIS 3166E



35

FTF HEINZ 736H

M | PG1340828 | FTF 736H | 10-Jan-20 | Polled Purebred

LFE RS LEWIS 3166E

{ KWA BIG TIME 86A
LFE BISS DREAMLADY 2201Z

KRSS RED BELLA 155E

{ KOP SPARTAN 113A
KRSS RED BELLA

BW	WWT	adj YWT	EPDs	CE	BW	WW	YW	Milk	MCE	MWWT	STAY
98	690	1228		7.6	2.1	77.6	111	27.8	3	66.5	16.9

We purchased this Lewis Sire in 2019 when looking for a moderate red bull that could work on some second calvers and be an outcross to our herd. This bull didn't come with a name so we call him Spud. Lot 35 is a smooth made moderate bull off of a red baldy female that works hard for us and is a pleasure to have around. When looking for a bull to get the job done and retain a few females with nice feet and udders I would think this bull would be worth a look.



35

36

FTF HAMMER 765H

M | BPG1341014 | FTF 765H | 21-Jan-20 | Polled Purebred

LFE RS LEWIS 3166E

{ KWA BIG TIME 86A
LFE BISS DREAMLADY 2201Z

FTF EVELYN 452E

{ EDN ARIZONA 131A
GREAT DANE RED DESTINY

BW	WWT	adj YWT	EPDs	CE	BW	WW	YW	Milk	MCE	MWWT	STAY
58	500	1092		8.2	2.3	70.5	101.8	24	4.8	59.2	17

This bull came early off of a black Arizona female that fell ill following a cold snap in January. Although he was small at birth, he was vigorous and had more heart than most, growing up to the animal he is today. I'm fairly confident this guy is genetically an outcross to most anyone's herd.



36



37

FTF HELIX 772H

M | PG1341093 | FTF 772H | 25-Jan-20 | Scurred Purebred

LFE RS LEWIS 3166E

KWA BIG TIME 86A
LFE BISS DREAMLADY 2201Z
CLEARWATER BARON 1B
GREAT DANE MISS WHIZ

FTF DANCE 339D

BW	WWT	adj YWT	EPDs	CE	BW	WW	YW	Milk	MCE	MWWT	STAY
99	620	1228		7	3	71	96.8	29.5	0.6	64.9	17.4

Here is a red bull that comes from a red baldy cow which has a great hair coat, nice tidy udder and great feet. These Spud calves are very similar in make up, showing consistency in a bloodline, which can certainly be capitalized on with respect to marketing a nice uniform set of steers.

38

FTF HALO 775H

M | PG1341097 | FTF 775H | 30-Jan-20 | Polled Purebred

LFE RS LEWIS 3166E

KWA BIG TIME 86A
LFE BISS DREAMLADY 2201Z
ZSL MR RED MANDAKO 49B
RENDEZVOUS KENDRA 63C

RENDEZVOUS MS MANDY 485F

BW	WWT	adj YWT	EPDs	CE	BW	WW	YW	Milk	MCE	MWWT	STAY
96	500	1058		4.5	3.6	78.8	112.6	25.5	-1.4	64.9	15.8

775H is a moderate bull with a big middle. Very friendly by nature this guy was orphaned out on grass this summer, and did it all on his own. It sure is unfortunate about losing his dam, as she was a real gem...but that's ranching, and here is her living on.

39

FTF HUMBLE 777H

M | PG1341102 | FTF 777H | 6-Feb-20 | Polled Purebred

LFE RS LEWIS 3166E

KWA BIG TIME 86A
LFE BISS DREAMLADY 2201Z
MAF MOUNTAIN 152B
FTF CASSIDY 238C

FTF EMMA 424E

BW	WWT	adj YWT	EPDs	CE	BW	WW	YW	Milk	MCE	MWWT	STAY
88	660	1353		9.7	2.6	70.7	103.5	28.8	7	64.2	15

The last bull in this year's catalogue is one that needs a long hard look. I stress cow families all the time, and spend most of my time talking up the cows that raise the lots on offer because I believe very deeply in encouraging strong maternal traits bred into these bulls. I want our buyers to not only have great steer crops but a keeper heifer pen that they are proud of, and ultimately can make some money with. I cannot say enough about 777's dam. She is the real deal and is arguably one of the most special young cows we have raised. I see a lot of good in this bull, and urge you to study him up and take a second and third look on sale day.



Registered Females

40 FTF MISS DAREDEVIL 721G

F | PG1340245 | FTF 721G | 31-Dec-19 | Polled Purebred

MRL DARE DEVIL 243D

{ MRL PRETTY RECKLESS 68B
MRL MISS 2388Z

FTF DIAMOND 402D

{ ROCK STAR CAPONE 5C
TYMARC CLASSY 812U

BW	WWT	adj YWT	EPDs	CE	BW	WW	YW	Milk	MCE	MWWT	STAY
92	685	760		2.6	5.2	85.6	126.2	23.2	1.1	66	13.4

When I think about selling this female, I really question myself, as she is a real catch. Long, deep, colourful, and friendly, I really hope I get a chance to see her when she is mature. The dam to this girl is a big beautiful Capone female that cannot be faulted. With Daredevil on the top side I think this girl deserves a star in the catalogue on sale day.



40

41 FTF MISS CAPONE 759H

F | PG1340924 | FTF 759G | 19-Jan-20 | Polled Purebred

ROCK STAR CAPONE 5C

{ MR TR HAMMER 308A ET
RF INTENSE 359A

FTF CATE 237C

{ PAW RED 28X
GREAT DANE PELTONS DREAM

BW	WWT	adj YWT	EPDs	CE	BW	WW	YW	Milk	MCE	MWWT	STAY
102	640	750		3.3	5.5	77.8	123.8	18.9	1.5	57.7	15.1

A black heifer off of the legend Capone is up for grabs here. Backed by our super 237C cow, this girl is destined to be a big middled, tidy uddered, heavy milking super footed female. We haven't wanted to part with Capone females as they are so special, but with his progeny being retained for years now, we want share dome of these great females.



41

42 FTF MISS WHISKEY 785H

F | PG1341115 | FTF 785G | 12-Mar-20 | Polled Purebred

MRL WHISKEY 54D

{ MRL RED WHISKEY 101B
MRL MISS 762Y

SCSF DREAM GIRL 21U

{ WHEATLAND BULL 629S
CIRCLE F MS SHARLA 24S

BW	WWT	adj YWT	EPDs	CE	BW	WW	YW	Milk	MCE	MWWT	STAY
101	568	670		9.7	2.3	70.9	97.2	26.9	8.8	62.3	13.3

Here is a Whiskey female off of the old SCSF 21U cow that has raised so many awesome calves over the years for us. She is a youngster in the pen, but fits in with the older calves and has some very fancy markings that should pass on to her calves.



42

Thank You **TO OUR 2020 BUYERS**

Wild Weiss Ranch- Matt & Sarah

Weiss *+

Robert Melnyk

Murray Richards

H I S Ranch

Jordan Jackson

Reba Dekock +

Lionel Tschetter +

Phil & Barb Pybus *

Willy Penner

Painted K Farms - Kaylyn Rounds *+

James Peel *

Blazin J Inc. +

Mike & Wynter Weiss *+

Don & Donna Alexander *

Peace View Colony *

Janice & Robert Blum

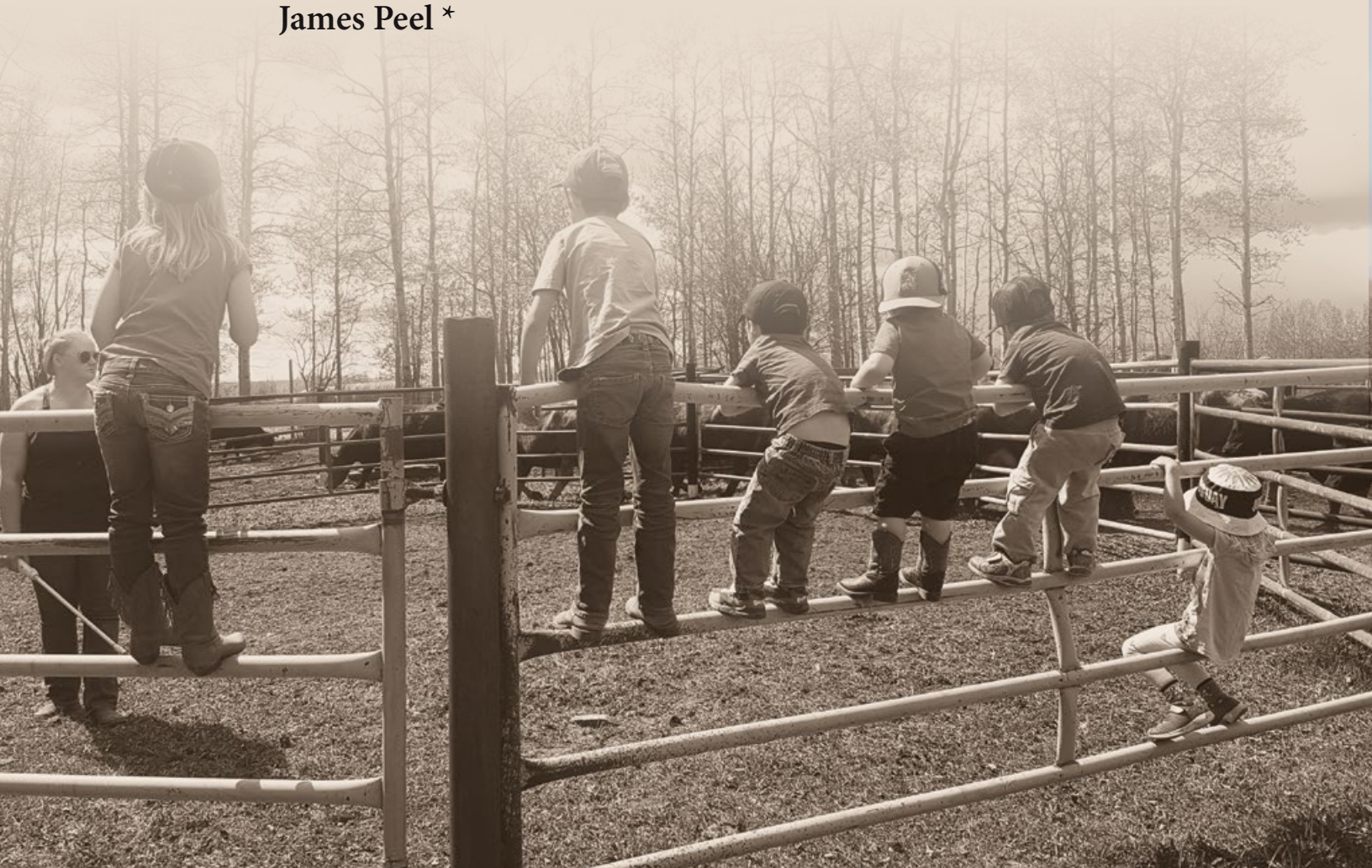
Lee Lefferson

Mirek Skrocki

Linda McClarty & Gay Lewis

***Repeat Buyers**

+ Multiple Purchase



COMMERCIAL FEMALES

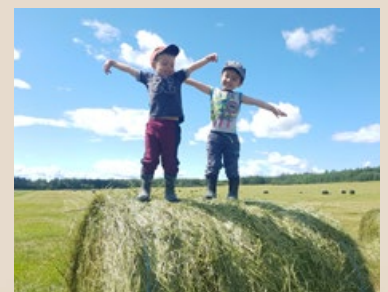
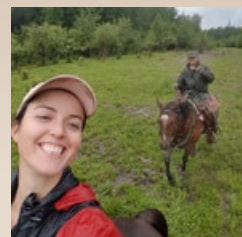
- 10 Commercial Bred Heifers.
- Sold in uniform groups with lot sizes and terms announced sale day.
- Directly out of our keeper pen. These girls are some of the best we have raised yet! Excellent dispositions, and easy to work with. They are out of moderate framed Simmental Angus Cows, with good feet and udders. Bred to red and black Angus heifer bulls. We run a full herd health program consisting of Modified Live Bovishield Gold One with Fetal Protection, Tasvax 8, and Ivomec. Due to start calving at the end of April, with exposure for only two cycles.

Commercial Bred Heifer Offering from Mike and Wynter Weiss

For more information, please call Mike at 780-864-0356

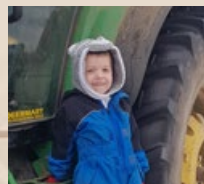
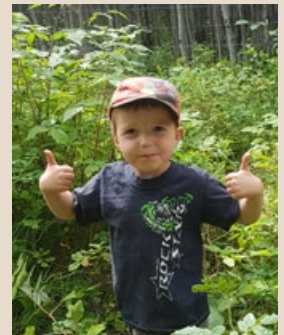


Future Herdsire: Rendezvous North Star 49G



TERMS AND CONDITIONS

- **TERMS** - The terms of the sale are cash or cheque payable at par at sale location. The right of property shall not pass until after settlement is made. All settlements must be made with the sale clerk before any cattle will be released. All monies are in Canadian Funds.
- **BID** - Every animal entering the ring will be sold to the highest bidder.
- **SALES TAXES** – Applicable sales taxes will be charged on semen, embryos and trucking fees (if listed), respective to the home province of the buyer, not the seller.
- **DISPUTES** - In cases of disputes, bidding will be reopened between the parties involved. If no further bid is made the buyer will be the person from whom the auctioneer accepted the last bid. The auctioneer's decision in such matters will be final.
- **PURCHASER'S RISK** - Each animal becomes the risk of the purchaser as soon as sold. Animals will be cared for at the purchaser's risk for a reasonable length of time.
- **INSURANCE** – Will be available sale day. All animals returning to Fallen Timber Farms must be insured.
- **INFORMATION & PICTURES SUPPLIED** - The information contained in this catalog is believed to be true and accurate.
- **ANNOUNCEMENTS** from the auction block will take precedence over the printed matter in the catalog. Buyers are therefore cautioned to pay attention to any such announcements.
- **CERTIFICATE OF REGISTRY** - A registration/recordation certificate issued by the Canadian Simmental Association and duly transferred will be furnished to the buyer of each animal after settlement has been made.
- **SHIPPING** - Assistance will be given in making shipment after the sale but no risk is assumed by VJV, or Fallen Timber Farms. Expenses incurred are the responsibility of the purchaser. Purchasers are requested to furnish shipping instructions when making settlement.
- **BREEDERS GUARANTEE** - As per applicable Canadian Simmental Association Breeding Guarantee guidelines. In no event shall the seller be responsible for reimbursing more than the purchase price.
- **EXCEPTION TO GUARANTEE** - In cases where the animal is subjected to any hormonal or surgical reproduction techniques after the sale, the guarantee shall be null and void.
- **HEALTH** - It is the buyer's responsibility to determine health requirements for importing any animal into his province or state.
- **ACCIDENTS** - Although every precaution will be taken to protect the safety and comfort of buyers, neither the Sales Management, auctioneer, consignors. or Association assumes any responsibility in this matter and disclaims any liability legal or otherwise in the event of accident or loss of property.
- **RIGHTS AND OBLIGATIONS** - The above terms and conditions of the sale shall constitute a contract between the buyer and the seller and be equally binding to both. Resale of animals following purchase in this sale shall constitute a separate transaction and the rights and obligations of the two parties connected thereto are not covered by the terms and conditions of this sale. The Auctioneer shall have the right to refuse bids from anyone who has a previous record of default in payment or who has not made proper credit clearance prior to the sale with Fallen Timber Farms or VJV.



FALLEN TIMBER FARMS

Chet and Jamie Jans

Box 223

Groundbirch BC

V0C 1T0

